

Average Daily Net Press Run For the Week Ended Dec. 27, 1956 12,405

Manchester Evening Herald

Manchester—A City of Village Charm

(Classified Advertising on Page 8)

PRICE FIVE CENTS

About Town

Officers of the Polish American Club will hold an important meeting tonight at 8 o'clock at the club-house.

Memorial Temple, Polish Benevolent Society

Memorial Temple, Polish Benevolent Society, will celebrate its 4th anniversary celebration and Christmas party, postponed from Tuesday evening, tonight at 8 o'clock in Odd Fellows Hall.

Explorers Scouts Tour Nike Sites

About 20 Explorers of Troop 25 at the Center Congregational Church toured the Nike installations in the Manchester area yesterday.

Public Records

Warrant Deeds: Doris M. Roberts, et al. vs. Philip S. Hyde Jr. and Frances I. Hyde.

Sisterhood Plans New Year's Dance

Plans are being made for the annual New Year's Eve dance sponsored by the Sisterhood of the Temple Beth Shalom in the vestry hall of the Temple Monday.

Funeral Home

A NEW FUNERAL HOME UNDER EXPERIENCED MANAGEMENT THE JOHN E. TIERNEY FUNERAL HOME

FOR RENT

8 and 10 room. Movie Projector on the premises. Mr. and Mrs. WELDON DRUG CO.

Pinhurst Pinohurst Pinohurst Ham Roast Beef Pinohurst Poultry

If it's ham you want this weekend or New Year's... offer MORRELL'S READY TO EAT HAM.

At Everyday Low Prices!

Pinhurst Pinohurst Pinohurst Ham Roast Beef Pinohurst Poultry

Reduced For Clearance!

BOYS' and GIRLS' Snow Suits and Jackets

Reduced For Clearance!

GIRLS' JACKET and Coats

Special Today

CHEVROLET CHEVROLET CHEVROLET CHEVROLET CHEVROLET

Free Parking

FREE PARKING AT THE REAR OF OUR STORE

Green Stamps

20% GREEN STAMPS WITH CASH SALES

McClure Pontiac, Inc.

McClure Pontiac, Inc. 373 MAIN ST. TEL. MI 9-4545

It's The Talk Of Manchester!

75% REDUCTION ON ALL OUR COATS and DRESSES

65 Homes Destroyed In Three West Fires

Manly, Calif., Dec. 27 (AP)—A fire in a building here today destroyed 65 homes.

UN Starts Clearing Suez Canal Debris

Suez, Egypt, Dec. 27 (AP)—United Nations salvage teams today began clearing debris from the Suez Canal.

Why the Fire Alarm Sounded Early Today

Smoke belched out of the barn at 304 Autumn St. in the early morning hours today while firemen poked hundreds of gallons of water into the structure in an effort to squelch the blaze.

U.S. Revokes Passports of Three in China

Washington, Dec. 26 (AP)—Three American newsmen who entered Red China this week have had their passports revoked, except for travel back to the United States.

Celebes Rebels Defy Regime in Jakarta

Jakarta, Indonesia, Dec. 26 (AP)—Sumatra. Most of Indonesia's Celebes rebels today defied the Indonesian republic.

Special Today

CHEVROLET CHEVROLET CHEVROLET CHEVROLET CHEVROLET

Free Parking

FREE PARKING AT THE REAR OF OUR STORE

Green Stamps

20% GREEN STAMPS WITH CASH SALES

McClure Pontiac, Inc.

McClure Pontiac, Inc. 373 MAIN ST. TEL. MI 9-4545

It's The Talk Of Manchester!

75% REDUCTION ON ALL OUR COATS and DRESSES

65 Homes Destroyed In Three West Fires

Manly, Calif., Dec. 27 (AP)—A fire in a building here today destroyed 65 homes.

UN Starts Clearing Suez Canal Debris

Suez, Egypt, Dec. 27 (AP)—United Nations salvage teams today began clearing debris from the Suez Canal.

Why the Fire Alarm Sounded Early Today

Smoke belched out of the barn at 304 Autumn St. in the early morning hours today while firemen poked hundreds of gallons of water into the structure in an effort to squelch the blaze.

Special Today

CHEVROLET CHEVROLET CHEVROLET CHEVROLET CHEVROLET

Free Parking

FREE PARKING AT THE REAR OF OUR STORE

Green Stamps

20% GREEN STAMPS WITH CASH SALES

McClure Pontiac, Inc.

McClure Pontiac, Inc. 373 MAIN ST. TEL. MI 9-4545

It's The Talk Of Manchester!

75% REDUCTION ON ALL OUR COATS and DRESSES

65 Homes Destroyed In Three West Fires

Manly, Calif., Dec. 27 (AP)—A fire in a building here today destroyed 65 homes.

UN Starts Clearing Suez Canal Debris

Suez, Egypt, Dec. 27 (AP)—United Nations salvage teams today began clearing debris from the Suez Canal.

Why the Fire Alarm Sounded Early Today

Smoke belched out of the barn at 304 Autumn St. in the early morning hours today while firemen poked hundreds of gallons of water into the structure in an effort to squelch the blaze.

Special Today

CHEVROLET CHEVROLET CHEVROLET CHEVROLET CHEVROLET

Free Parking

FREE PARKING AT THE REAR OF OUR STORE

Green Stamps

20% GREEN STAMPS WITH CASH SALES

McClure Pontiac, Inc.

McClure Pontiac, Inc. 373 MAIN ST. TEL. MI 9-4545

It's The Talk Of Manchester!

75% REDUCTION ON ALL OUR COATS and DRESSES

65 Homes Destroyed In Three West Fires

Manly, Calif., Dec. 27 (AP)—A fire in a building here today destroyed 65 homes.

UN Starts Clearing Suez Canal Debris

Suez, Egypt, Dec. 27 (AP)—United Nations salvage teams today began clearing debris from the Suez Canal.

Why the Fire Alarm Sounded Early Today

Smoke belched out of the barn at 304 Autumn St. in the early morning hours today while firemen poked hundreds of gallons of water into the structure in an effort to squelch the blaze.

Special Today

CHEVROLET CHEVROLET CHEVROLET CHEVROLET CHEVROLET

Free Parking

FREE PARKING AT THE REAR OF OUR STORE

Green Stamps

20% GREEN STAMPS WITH CASH SALES

McClure Pontiac, Inc.

McClure Pontiac, Inc. 373 MAIN ST. TEL. MI 9-4545

It's The Talk Of Manchester!

75% REDUCTION ON ALL OUR COATS and DRESSES

65 Homes Destroyed In Three West Fires

Manly, Calif., Dec. 27 (AP)—A fire in a building here today destroyed 65 homes.

UN Starts Clearing Suez Canal Debris

Suez, Egypt, Dec. 27 (AP)—United Nations salvage teams today began clearing debris from the Suez Canal.

Why the Fire Alarm Sounded Early Today

Smoke belched out of the barn at 304 Autumn St. in the early morning hours today while firemen poked hundreds of gallons of water into the structure in an effort to squelch the blaze.

Special Today

CHEVROLET CHEVROLET CHEVROLET CHEVROLET CHEVROLET

Free Parking

FREE PARKING AT THE REAR OF OUR STORE

Green Stamps

20% GREEN STAMPS WITH CASH SALES

Special Today

CHEVROLET CHEVROLET CHEVROLET CHEVROLET CHEVROLET

Free Parking

FREE PARKING AT THE REAR OF OUR STORE

Green Stamps

20% GREEN STAMPS WITH CASH SALES

McClure Pontiac, Inc.

McClure Pontiac, Inc. 373 MAIN ST. TEL. MI 9-4545

It's The Talk Of Manchester!

75% REDUCTION ON ALL OUR COATS and DRESSES

65 Homes Destroyed In Three West Fires

Manly, Calif., Dec. 27 (AP)—A fire in a building here today destroyed 65 homes.

UN Starts Clearing Suez Canal Debris

Suez, Egypt, Dec. 27 (AP)—United Nations salvage teams today began clearing debris from the Suez Canal.

Why the Fire Alarm Sounded Early Today

Smoke belched out of the barn at 304 Autumn St. in the early morning hours today while firemen poked hundreds of gallons of water into the structure in an effort to squelch the blaze.

Special Today

CHEVROLET CHEVROLET CHEVROLET CHEVROLET CHEVROLET

Free Parking

FREE PARKING AT THE REAR OF OUR STORE

Green Stamps

20% GREEN STAMPS WITH CASH SALES

McClure Pontiac, Inc.

McClure Pontiac, Inc. 373 MAIN ST. TEL. MI 9-4545

It's The Talk Of Manchester!

75% REDUCTION ON ALL OUR COATS and DRESSES

65 Homes Destroyed In Three West Fires

Manly, Calif., Dec. 27 (AP)—A fire in a building here today destroyed 65 homes.

UN Starts Clearing Suez Canal Debris

Suez, Egypt, Dec. 27 (AP)—United Nations salvage teams today began clearing debris from the Suez Canal.

Why the Fire Alarm Sounded Early Today

Smoke belched out of the barn at 304 Autumn St. in the early morning hours today while firemen poked hundreds of gallons of water into the structure in an effort to squelch the blaze.

Special Today

CHEVROLET CHEVROLET CHEVROLET CHEVROLET CHEVROLET

Free Parking

FREE PARKING AT THE REAR OF OUR STORE

Green Stamps

20% GREEN STAMPS WITH CASH SALES

Special Today

CHEVROLET CHEVROLET CHEVROLET CHEVROLET CHEVROLET

Free Parking

FREE PARKING AT THE REAR OF OUR STORE

Green Stamps

20% GREEN STAMPS WITH CASH SALES

McClure Pontiac, Inc.

McClure Pontiac, Inc. 373 MAIN ST. TEL. MI 9-4545

It's The Talk Of Manchester!

75% REDUCTION ON ALL OUR COATS and DRESSES

65 Homes Destroyed In Three West Fires

Manly, Calif., Dec. 27 (AP)—A fire in a building here today destroyed 65 homes.

UN Starts Clearing Suez Canal Debris

Suez, Egypt, Dec. 27 (AP)—United Nations salvage teams today began clearing debris from the Suez Canal.

Why the Fire Alarm Sounded Early Today

Smoke belched out of the barn at 304 Autumn St. in the early morning hours today while firemen poked hundreds of gallons of water into the structure in an effort to squelch the blaze.

Special Today

CHEVROLET CHEVROLET CHEVROLET CHEVROLET CHEVROLET

Free Parking

FREE PARKING AT THE REAR OF OUR STORE

Green Stamps

20% GREEN STAMPS WITH CASH SALES

McClure Pontiac, Inc.

McClure Pontiac, Inc. 373 MAIN ST. TEL. MI 9-4545

It's The Talk Of Manchester!

75% REDUCTION ON ALL OUR COATS and DRESSES

65 Homes Destroyed In Three West Fires

Manly, Calif., Dec. 27 (AP)—A fire in a building here today destroyed 65 homes.

UN Starts Clearing Suez Canal Debris

Suez, Egypt, Dec. 27 (AP)—United Nations salvage teams today began clearing debris from the Suez Canal.

Why the Fire Alarm Sounded Early Today

Smoke belched out of the barn at 304 Autumn St. in the early morning hours today while firemen poked hundreds of gallons of water into the structure in an effort to squelch the blaze.

Special Today

CHEVROLET CHEVROLET CHEVROLET CHEVROLET CHEVROLET

Free Parking

FREE PARKING AT THE REAR OF OUR STORE

Green Stamps

20% GREEN STAMPS WITH CASH SALES

Special Today

CHEVROLET CHEVROLET CHEVROLET CHEVROLET CHEVROLET

Free Parking

FREE PARKING AT THE REAR OF OUR STORE

Green Stamps

20% GREEN STAMPS WITH CASH SALES

McClure Pontiac, Inc.

McClure Pontiac, Inc. 373 MAIN ST. TEL. MI 9-4545

It's The Talk Of Manchester!

75% REDUCTION ON ALL OUR COATS and DRESSES

65 Homes Destroyed In Three West Fires

Manly, Calif., Dec. 27 (AP)—A fire in a building here today destroyed 65 homes.

UN Starts Clearing Suez Canal Debris

Suez, Egypt, Dec. 27 (AP)—United Nations salvage teams today began clearing debris from the Suez Canal.

Why the Fire Alarm Sounded Early Today

Smoke belched out of the barn at 304 Autumn St. in the early morning hours today while firemen poked hundreds of gallons of water into the structure in an effort to squelch the blaze.

Special Today

CHEVROLET CHEVROLET CHEVROLET CHEVROLET CHEVROLET

Free Parking

FREE PARKING AT THE REAR OF OUR STORE

Green Stamps

20% GREEN STAMPS WITH CASH SALES

McClure Pontiac, Inc.

McClure Pontiac, Inc. 373 MAIN ST. TEL. MI 9-4545

It's The Talk Of Manchester!

75% REDUCTION ON ALL OUR COATS and DRESSES

65 Homes Destroyed In Three West Fires

Manly, Calif., Dec. 27 (AP)—A fire in a building here today destroyed 65 homes.

UN Starts Clearing Suez Canal Debris

Suez, Egypt, Dec. 27 (AP)—United Nations salvage teams today began clearing debris from the Suez Canal.

Why the Fire Alarm Sounded Early Today

Smoke belched out of the barn at 304 Autumn St. in the early morning hours today while firemen poked hundreds of gallons of water into the structure in an effort to squelch the blaze.

Special Today

CHEVROLET CHEVROLET CHEVROLET CHEVROLET CHEVROLET

Free Parking

FREE PARKING AT THE REAR OF OUR STORE

Green Stamps

20% GREEN STAMPS WITH CASH SALES

Special Today

CHEVROLET CHEVROLET CHEVROLET CHEVROLET CHEVROLET

Free Parking

FREE PARKING AT THE REAR OF OUR STORE

Green Stamps

20% GREEN STAMPS WITH CASH SALES

McClure Pontiac, Inc.

McClure Pontiac, Inc. 373 MAIN ST. TEL. MI 9-4545

It's The Talk Of Manchester!

75% REDUCTION ON ALL OUR COATS and DRESSES

65 Homes Destroyed In Three West Fires

Manly, Calif., Dec. 27 (AP)—A fire in a building here today destroyed 65 homes.

UN Starts Clearing Suez Canal Debris

Suez, Egypt, Dec. 27 (AP)—United Nations salvage teams today began clearing debris from the Suez Canal.

Why the Fire Alarm Sounded Early Today

Smoke belched out of the barn at 304 Autumn St. in the early morning hours today while firemen poked hundreds of gallons of water into the structure in an effort to squelch the blaze.

Special Today

CHEVROLET CHEVROLET CHEVROLET CHEVROLET CHEVROLET

Free Parking

FREE PARKING AT THE REAR OF OUR STORE

Green Stamps

20% GREEN STAMPS WITH CASH SALES

McClure Pontiac, Inc.

McClure Pontiac, Inc.

**EASTWOOD**  
 "Maverick"  
 "Queen"  
 "Maverick"  
 "Queen"

**Deaths Last Night**  
 By THE ASSOCIATED PRESS  
 Palm Beach, Fla.—Charles Francis (Society) Coe, 66, famed writer of prize fights and the prohibition era, editor and publisher of the Palm Beach Post and Times, attorney, former motion picture executive and radio announcer, died Friday. He was born in Buffalo, N. Y.

**STATE**  
 MONDAY AFTERNOON AT 2:30 ONLY  
 HEY KIDDIES!  
 MONDAY SPECIAL KIDDIE SHOW!  
 ALL NEW  
 Tom & Jerry  
 LATE TIME CIRCUS  
 TOM & JERRY  
 3 STOOGIE COMEDIES  
 and your FAVORITE COMEDIANS  
 FREE Comic Book For Every Child  
 CHILDREN 30c—ADULTS 50c

**BURNSIDE**  
 "LOVE ME TENDER"  
 "MAYERICK QUEEN"  
 "MAYERICK QUEEN"  
 "MAYERICK QUEEN"

**DANCING**  
 EVERY SATURDAY NIGHT  
 Miller's Hall  
 TOLLAND TURNPIKE  
 Read Herald Advs.

**BUSHNELL**  
 7 Performances Starting  
 Tonight at 8:15  
 Tomorrow at 7:30 and 9:30 p.m.  
 Sunday at 2:30 and 4:30 p.m.  
 Tuesday at 7:30 and 9:30 p.m.

**REGULAR PRICES THIS WEEK**  
 "SUN"  
 "PERSON"  
 "TOMMY TONK"  
 "SOLITAIRE"  
 "VALENTINES"  
 "MONA CAROL"  
 "ZIPPY CHIMP"

**TRY HOWARD JOHNSON'S**  
 11-OZ. HEAVY STEER  
 CHARCOAL BROILED  
**STEAK \$2.50**  
 Complete Dinner  
 HOWARD JOHNSON'S  
 Located 1/2 Mile West of  
 Oakland Street on  
 Tolland Turnpike

**TELEVISION PROGRAMS**  
 for the best in local shows!  
 Berlin  
 Correspondent  
 On The Late Show  
 Tonight—11:15 P. M.  
 for all the NBC programs!

**SEPTIC TANKS**  
 Installation and Repair  
 SEWERS CLEANED  
 and INSTALLED  
 CELLARS DRAINED  
 TOWN and COUNTRY  
 DRAINAGE CO.  
 PHONE MI 4-1415

**ICE**  
 VOGUES of  
 1957

**MONA CAROL**  
 "ZIPPY CHIMP"

**WALNUT RESTAURANT**  
 5-7 WALNUT STREET  
 attend our Gala  
 NEW YEAR'S EVE PARTY  
 MUSIC BY  
 George Smith  
 and HIS ORCHESTRA  
 MAKE RESERVATIONS  
 NOW  
 Call MI 9-8070

**YOUR YARN SHOP**  
 One Block East of Main  
 Between Oak and Birch  
 Art Needlework  
 Supplies  
 Free Instructions  
 Free Parking  
 30 COTTAGE ST.—MI 2-2528

**Don Willis Garage**  
 SPECIALISTS IN  
 WHEEL ALIGNMENT and  
 BRAKE SERVICE  
 GENERAL AUTO REPAIR  
 Mitchell 8-4581—18 MAIN ST., MANCHESTER

**Rockville-Vernon  
 Suit Against City to Be Heard  
 Wednesday in Hartford Court**

Rockville, Dec. 28 (Special)—The suit filed by Rockville against the City of Rockville may be heard in Hartford County Superior Court Wednesday.

The curbing suit is scheduled for assignment at 10 a.m. that day before Judge William Shea.

Atty. Harry Hammer, corporation counsel for the City of Rockville, said today he plans to offer a preliminary motion seeking a hearing on his demerit. If granted, the demerit may be heard at that time or at the next regular session Friday.

The demerit requests that action be limited to a declaratory judgment on the city's acceptance of the suit.

The suit was filed by the developer of Hillside Estates when the City Council refused to accept the city's plan, a street in the development, because of what is considered to be improper curbing.

The plaintiff originally sought a temporary injunction to prevent the city to provide services to the street, a declaratory judgment that the city wrongfully refused to accept the street, a declaratory judgment that the Planning Commission, in effect approved the street, and also seeks \$100,000 damages.

Judge John R. Thim, Hartford County Superior Court, in an order hearing refused to grant the temporary injunction.

The city and the developer agreed to have the parties settle the case out of court. He stated that he thought the city's case should be heard at one time and considered an issue.

Atty. Hammer said both he and Atty. Joseph P. Conroy, counsel for the plaintiff, are working on the assumption the case will be tried Wednesday.

**Police Needed  
 For Hungarians  
 At Camp Kilmer**

The Manchester American Red Cross Chapter today announced receipt of an urgent telegram plea for more clothing to be shipped to Rockville for the Hungarian refugees.

The request from a National Red Cross office in Rockville, N. Y., was received today by the local Red Cross office at 69 Center St. from 9 a.m. on Monday.

The children's program will include distribution of Christmas gifts.

The Rev. Mr. Foulkes also announced the New Year Day Communion service at 10 a.m. will include Corporate Communion by the Rev. George and the Brotherhood of St. Andrew.

Church Announcements  
 Rev. Maurice G. Poulkes, pastor of St. John's Episcopal Church, said today the children's Sunday School program canceled last Sunday because of the storm, will be held this Sunday at 9:30 a.m. in place of the Holy Communion service.

The children's program will include distribution of Christmas gifts.

The Rev. Mr. Foulkes also announced the New Year Day Communion service at 10 a.m. will include Corporate Communion by the Rev. George and the Brotherhood of St. Andrew.

**The Crackerbarrel**  
 By Roger Morin  
 County Editor

Perhaps this week's top news item in this column is the fact that the City Council will be controlled by a Democratic majority.

The City Council which is controlled by a Democratic majority, convened with what they considered to be an "attempted ouster" of the Mayor.

At present, Mayor Olson is police chief. However, the Democratic substitute plan would strip the Mayor of his appointive powers. The mayor had hoped to appoint John J. Yasulka, retired state policeman, to the office of police chief.

At the strict adherence to his political party in the Democratic vote on the Police Department, Mayor Olson said he could not agree to have men who would be in charge of the city's police force.

Atty. Hammer said both he and Atty. Joseph P. Conroy, counsel for the plaintiff, are working on the assumption the case will be tried Wednesday.

**Alleged Fleece  
 Caught at Vernon**

Vernon, Dec. 28 (Special)—Harry Guerton, 62, Lamoine Rd., an alleged "confidence man" was arrested here Thursday night by officers from the Westbrook State Police barracks.

Police said Guerton, who also called himself "Charles Edward Gilton," allegedly fleeced an elderly Malton woman of \$3,000.

Guerton, who had worked for the woman as a chauffeur and handyman, obtained the money from the proceeds of a sale of investment in California mining claims.

The case, presented in Malton Justice Court yesterday, was continued to Monday night. Guerton was remanded to New Haven County Jail under \$5,000 bond.

Officers Bruce Harris of Stafford Springs barracks, who made the arrest, said Guerton was about to receive another \$3,000 from the woman when he was arrested.

He used the money to furnish his own apartment and for personal expenses, they said.

**QUINN'S PHARMACY**  
 OPEN SUNDAYS  
 9 A.M. to 1 P.M.  
 6 P.M. to 9 P.M.

**ChargePlan**  
 PINE PHARMACY  
 664 Center St.—Tel. MI 9-9814  
 PINE LENOX PHARMACY  
 599 E. Center St.—MI 9-0884

**HOSPITAL BEDS  
 and WHEEL CHAIRS  
 KEITH COMPANY**  
 FOR SALE or RENT  
 Closed Monday and Tuesday  
 (Next Week Only)

**OR START WITH**  
 Clear Slate

**NOTICE**  
 We Will Be  
 CLOSED  
 Monday, Dec. 31  
 and Tuesday, Jan. 1  
**E. A. JOHNSON  
 PAINT CO.**  
 723 MAIN STREET

**Services**  
 That Interpret The  
 Wishes Of The Family  
**JOHN B. BURKE  
 FUNERAL HOME**  
 TEL. MI 4-4865  
 81 EAST CENTER ST.  
 AMBULANCE SERVICE

**WESTOWN PHARMACY**  
 430 Hartford Rd.—MI 9-3616  
 OPEN ALL DAY SUNDAY

**SAVINGS DEPOSITS**  
 received ON or BEFORE  
 January 5th  
 WILL DRAW INTEREST  
 from January 1st

**HAPPY NEW YEAR**  
 PLEASE NOTE  
 HOLIDAY HOURS  
 Open New Year's Eve  
 Until 1 P.M.  
 Open all day New  
 Year's Day, as usual

**SHADY GLEN FARM-FRESH  
 EGG NOG**  
 Traditional holiday treat. A non-alcoholic drink that's delicious as is, or as a base for your own favorite recipe.  
 AND FOR QUICK, READY DESSERT  
**SHADY GLEN ICE CREAM**  
 Buy Shady Glen Ice Cream in the economical half-gallon party size. Now available in 22 delicious flavors.

**Shop Turnpike Market For  
 All Your Holiday Food Needs!**  
 HAMS, CAPONS, ROAST BEEF  
 CHEESE, OLIVES and OTHER  
 FEAST and PARTY NEEDS  
 COLD BEER, COLD SODA  
 ICE CREAM

**Member of both  
 FEDERAL RESERVE SYSTEM  
 FEDERAL DEPOSIT  
 INSURANCE CORPORATION**

**Turnpike Market**  
 181 MIDDLE TURNPIKE WEST — MI 3-2338

**FIRST NATIONAL BANK**  
 OF MANCHESTER  
 595 MAIN STREET  
 "A Greater Bank For Greater Manchester"

**ICE**  
 VOGUES of  
 1957

**MONA CAROL**  
 "ZIPPY CHIMP"

**WALNUT RESTAURANT**  
 5-7 WALNUT STREET  
 attend our Gala  
 NEW YEAR'S EVE PARTY  
 MUSIC BY  
 George Smith  
 and HIS ORCHESTRA  
 MAKE RESERVATIONS  
 NOW  
 Call MI 9-8070

**YOUR YARN SHOP**  
 One Block East of Main  
 Between Oak and Birch  
 Art Needlework  
 Supplies  
 Free Instructions  
 Free Parking  
 30 COTTAGE ST.—MI 2-2528

**Don Willis Garage**  
 SPECIALISTS IN  
 WHEEL ALIGNMENT and  
 BRAKE SERVICE  
 GENERAL AUTO REPAIR  
 Mitchell 8-4581—18 MAIN ST., MANCHESTER

**THE ROOST**  
 123 SPRUCE STREET  
 Place Your Order Now For  
 Chicken in a Basket  
 A REAL TREAT FOR NEW YEAR'S EVE!  
 FOR TAKE OUT ORDERS CALL MI 9-8239  
 OPEN THIS MONDAY, DEC. 31  
 Your Hostesses: Annelle Lee and Lois King

**MONA CAROL**  
 "ZIPPY CHIMP"

**WALNUT RESTAURANT**  
 5-7 WALNUT STREET  
 attend our Gala  
 NEW YEAR'S EVE PARTY  
 MUSIC BY  
 George Smith  
 and HIS ORCHESTRA  
 MAKE RESERVATIONS  
 NOW  
 Call MI 9-8070

**YOUR YARN SHOP**  
 One Block East of Main  
 Between Oak and Birch  
 Art Needlework  
 Supplies  
 Free Instructions  
 Free Parking  
 30 COTTAGE ST.—MI 2-2528

**Don Willis Garage**  
 SPECIALISTS IN  
 WHEEL ALIGNMENT and  
 BRAKE SERVICE  
 GENERAL AUTO REPAIR  
 Mitchell 8-4581—18 MAIN ST., MANCHESTER

**1957 1956**  
 BRING BACK THE OLD  
 RING IN THE NEW!  
 AT THE POPULAR  
**PRINCESS RESTAURANT**  
 MAIN ST. AT CORNER OF PEARL ST.

**MONA CAROL**  
 "ZIPPY CHIMP"

**WALNUT RESTAURANT**  
 5-7 WALNUT STREET  
 attend our Gala  
 NEW YEAR'S EVE PARTY  
 MUSIC BY  
 George Smith  
 and HIS ORCHESTRA  
 MAKE RESERVATIONS  
 NOW  
 Call MI 9-8070

**YOUR YARN SHOP**  
 One Block East of Main  
 Between Oak and Birch  
 Art Needlework  
 Supplies  
 Free Instructions  
 Free Parking  
 30 COTTAGE ST.—MI 2-2528

**Don Willis Garage**  
 SPECIALISTS IN  
 WHEEL ALIGNMENT and  
 BRAKE SERVICE  
 GENERAL AUTO REPAIR  
 Mitchell 8-4581—18 MAIN ST., MANCHESTER

**Open House**  
 FAVORITE NOISEMAKERS FOR ALL  
 SPECIAL NEW YEAR'S EVE MENU!  
 PLUS  
 CHOICE WINES, BEERS AND LIQUORS  
 NO MINIMUM • NO COVER

**MONA CAROL**  
 "ZIPPY CHIMP"

**WALNUT RESTAURANT**  
 5-7 WALNUT STREET  
 attend our Gala  
 NEW YEAR'S EVE PARTY  
 MUSIC BY  
 George Smith  
 and HIS ORCHESTRA  
 MAKE RESERVATIONS  
 NOW  
 Call MI 9-8070

**YOUR YARN SHOP**  
 One Block East of Main  
 Between Oak and Birch  
 Art Needlework  
 Supplies  
 Free Instructions  
 Free Parking  
 30 COTTAGE ST.—MI 2-2528

**Don Willis Garage**  
 SPECIALISTS IN  
 WHEEL ALIGNMENT and  
 BRAKE SERVICE  
 GENERAL AUTO REPAIR  
 Mitchell 8-4581—18 MAIN ST., MANCHESTER

**NEW YEAR'S EVE  
 DINNER**  
 Ring in the New Year with us  
 and have a wonderful time. Enjoy  
 a superb dinner perfectly  
 prepared and delightfully  
 served.

**MONA CAROL**  
 "ZIPPY CHIMP"

**WALNUT RESTAURANT**  
 5-7 WALNUT STREET  
 attend our Gala  
 NEW YEAR'S EVE PARTY  
 MUSIC BY  
 George Smith  
 and HIS ORCHESTRA  
 MAKE RESERVATIONS  
 NOW  
 Call MI 9-8070

**YOUR YARN SHOP**  
 One Block East of Main  
 Between Oak and Birch  
 Art Needlework  
 Supplies  
 Free Instructions  
 Free Parking  
 30 COTTAGE ST.—MI 2-2528

**Don Willis Garage**  
 SPECIALISTS IN  
 WHEEL ALIGNMENT and  
 BRAKE SERVICE  
 GENERAL AUTO REPAIR  
 Mitchell 8-4581—18 MAIN ST., MANCHESTER

**NEW YEAR'S EVE  
 DINNER**  
 Ring in the New Year with us  
 and have a wonderful time. Enjoy  
 a superb dinner perfectly  
 prepared and delightfully  
 served.

**MONA CAROL**  
 "ZIPPY CHIMP"

**WALNUT RESTAURANT**  
 5-7 WALNUT STREET  
 attend our Gala  
 NEW YEAR'S EVE PARTY  
 MUSIC BY  
 George Smith  
 and HIS ORCHESTRA  
 MAKE RESERVATIONS  
 NOW  
 Call MI 9-8070

**YOUR YARN SHOP**  
 One Block East of Main  
 Between Oak and Birch  
 Art Needlework  
 Supplies  
 Free Instructions  
 Free Parking  
 30 COTTAGE ST.—MI 2-2528

**Don Willis Garage**  
 SPECIALISTS IN  
 WHEEL ALIGNMENT and  
 BRAKE SERVICE  
 GENERAL AUTO REPAIR  
 Mitchell 8-4581—18 MAIN ST., MANCHESTER

**CAVEY'S RESTAURANT**  
 45 E. CENTER STREET

**MONA CAROL**  
 "ZIPPY CHIMP"

**WALNUT RESTAURANT**  
 5-7 WALNUT STREET  
 attend our Gala  
 NEW YEAR'S EVE PARTY  
 MUSIC BY  
 George Smith  
 and HIS ORCHESTRA  
 MAKE RESERVATIONS  
 NOW  
 Call MI 9-8070

**YOUR YARN SHOP**  
 One Block East of Main  
 Between Oak and Birch  
 Art Needlework  
 Supplies  
 Free Instructions  
 Free Parking  
 30 COTTAGE ST.—MI 2-2528

**Don Willis Garage**  
 SPECIALISTS IN  
 WHEEL ALIGNMENT and  
 BRAKE SERVICE  
 GENERAL AUTO REPAIR  
 Mitchell 8-4581—18 MAIN ST., MANCHESTER

**Police Arrests**  
 Maurice V. Wiley, 38, of 112  
 St. George St., was arrested  
 charged with failure to carry his  
 operator's license at 1:30 a.m. on  
 Monday. He is scheduled to appear in  
 Town Court Jan. 12.

**WESTOWN PHARMACY**  
 430 Hartford Rd.—MI 9-3616  
 OPEN ALL DAY SUNDAY

**HAPPY NEW YEAR**  
 PLEASE NOTE  
 HOLIDAY HOURS  
 Open New Year's Eve  
 Until 1 P.M.  
 Open all day New  
 Year's Day, as usual

**SHADY GLEN FARM-FRESH  
 EGG NOG**  
 Traditional holiday treat. A non-alcoholic drink that's delicious as is, or as a base for your own favorite recipe.  
 AND FOR QUICK, READY DESSERT  
**SHADY GLEN ICE CREAM**  
 Buy Shady Glen Ice Cream in the economical half-gallon party size. Now available in 22 delicious flavors.

**Police Arrests**  
 Maurice V. Wiley, 38, of 112  
 St. George St., was arrested  
 charged with failure to carry his  
 operator's license at 1:30 a.m. on  
 Monday. He is scheduled to appear in  
 Town Court Jan. 12.

**WESTOWN PHARMACY**  
 430 Hartford Rd.—MI 9-3616  
 OPEN ALL DAY SUNDAY

**HAPPY NEW YEAR**  
 PLEASE NOTE  
 HOLIDAY HOURS  
 Open New Year's Eve  
 Until 1 P.M.  
 Open all day New  
 Year's Day, as usual

**SHADY GLEN FARM-FRESH  
 EGG NOG**  
 Traditional holiday treat. A non-alcoholic drink that's delicious as is, or as a base for your own favorite recipe.  
 AND FOR QUICK, READY DESSERT  
**SHADY GLEN ICE CREAM**  
 Buy Shady Glen Ice Cream in the economical half-gallon party size. Now available in 22 delicious flavors.

**Police Arrests**  
 Maurice V. Wiley, 38, of 112  
 St. George St., was arrested  
 charged with failure to carry his  
 operator's license at 1:30 a.m. on  
 Monday. He is scheduled to appear in  
 Town Court Jan. 12.

**WESTOWN PHARMACY**  
 430 Hartford Rd.—MI 9-3616  
 OPEN ALL DAY SUNDAY

**HAPPY NEW YEAR**  
 PLEASE NOTE  
 HOLIDAY HOURS  
 Open New Year's Eve  
 Until 1 P.M.  
 Open all day New  
 Year's Day, as usual

**SHADY GLEN FARM-FRESH  
 EGG NOG**  
 Traditional holiday treat. A non-alcoholic drink that's delicious as is, or as a base for your own favorite recipe.  
 AND FOR QUICK, READY DESSERT  
**SHADY GLEN ICE CREAM**  
 Buy Shady Glen Ice Cream in the economical half-gallon party size. Now available in 22 delicious flavors.

**Police Arrests**  
 Maurice V. Wiley, 38, of 112  
 St. George St., was arrested  
 charged with failure to carry his  
 operator's license at 1:30 a.m. on  
 Monday. He is scheduled to appear in  
 Town Court Jan. 12.

**WESTOWN PHARMACY**  
 430 Hartford Rd.—MI 9-3616  
 OPEN ALL DAY SUNDAY

**HAPPY NEW YEAR**  
 PLEASE NOTE  
 HOLIDAY HOURS  
 Open New Year's Eve  
 Until 1 P.M.  
 Open all day New  
 Year's Day, as usual

**SHADY GLEN FARM-FRESH  
 EGG NOG**  
 Traditional holiday treat. A non-alcoholic drink that's delicious as is, or as a base for your own favorite recipe.  
 AND FOR QUICK, READY DESSERT  
**SHADY GLEN ICE CREAM**  
 Buy Shady Glen Ice Cream in the economical half-gallon party size. Now available in 22 delicious flavors.

**Police Arrests**  
 Maurice V. Wiley, 38, of 112  
 St. George St., was arrested  
 charged with failure to carry his  
 operator's license at 1:30 a.m. on  
 Monday. He is scheduled to appear in  
 Town Court Jan. 12.

**WESTOWN PHARMACY**  
 430 Hartford Rd.—MI 9-3616  
 OPEN ALL DAY SUNDAY

**HAPPY NEW YEAR**  
 PLEASE NOTE  
 HOLIDAY HOURS  
 Open New Year's Eve  
 Until 1 P.M.  
 Open all day New  
 Year's Day, as usual

**SHADY GLEN FARM-FRESH  
 EGG NOG**  
 Traditional holiday treat. A non-alcoholic drink that's delicious as is, or as a base for your own favorite recipe.  
 AND FOR QUICK, READY DESSERT  
**SHADY GLEN ICE CREAM**  
 Buy Shady Glen Ice Cream in the economical half-gallon party size. Now available in 22 delicious flavors.

**Police Arrests**  
 Maurice V. Wiley, 38, of 112  
 St. George St., was arrested  
 charged with failure to carry his  
 operator's license at 1:30 a.m. on  
 Monday. He is scheduled to appear in  
 Town Court Jan. 12.

**WESTOWN PHARMACY**  
 430 Hartford Rd.—MI 9-3616  
 OPEN ALL DAY SUNDAY

**HAPPY NEW YEAR**  
 PLEASE NOTE  
 HOLIDAY HOURS  
 Open New Year's Eve  
 Until 1 P.M.  
 Open all day New  
 Year's Day, as usual

**SHADY GLEN FARM-FRESH  
 EGG NOG**  
 Traditional holiday treat. A non-alcoholic drink that's delicious as is, or as a base for your own favorite recipe.  
 AND FOR QUICK, READY DESSERT  
**SHADY GLEN ICE CREAM**  
 Buy Shady Glen Ice Cream in the economical half-gallon party size. Now available in 22 delicious flavors.

**Police Arrests**  
 Maurice V. Wiley, 38, of 112  
 St. George St., was arrested  
 charged with failure to carry his  
 operator's license at 1:30 a.m. on  
 Monday. He is scheduled to appear in  
 Town Court Jan. 12.

**WESTOWN PHARMACY**  
 430 Hartford Rd.—MI 9-3616  
 OPEN ALL DAY SUNDAY

**HAPPY NEW YEAR**  
 PLEASE NOTE  
 HOLIDAY HOURS  
 Open New Year's Eve  
 Until 1 P.M.  
 Open all day New  
 Year's Day, as usual

**SHADY GLEN FARM-FRESH  
 EGG NOG**  
 Traditional holiday treat. A non-alcoholic drink that's delicious as is, or as a base for your own favorite recipe.  
 AND FOR QUICK, READY DESSERT  
**SHADY GLEN ICE CREAM**  
 Buy Shady Glen Ice Cream in the economical half-gallon party size. Now available in 22 delicious flavors.

**Police Arrests**  
 Maurice V. Wiley, 38, of 112  
 St. George St., was arrested  
 charged with failure to carry his  
 operator's license at 1:30 a.m. on  
 Monday. He is scheduled to appear in  
 Town Court Jan. 12.

**WESTOWN PHARMACY**  
 430 Hartford Rd.—MI 9-3616  
 OPEN ALL DAY SUNDAY

**HAPPY NEW YEAR**  
 PLEASE NOTE  
 HOLIDAY HOURS  
 Open New Year's Eve  
 Until 1 P.M.  
 Open all day New  
 Year's Day, as usual

**SHADY GLEN FARM-FRESH  
 EGG NOG**  
 Traditional holiday treat. A non-alcoholic drink that's delicious as is, or as a base for your own favorite recipe.  
 AND FOR QUICK, READY DESSERT  
**SHADY GLEN ICE CREAM**  
 Buy Shady Glen Ice Cream in the economical half-gallon party size. Now available in 22 delicious flavors.

**Mancheater Evening Herald**  
 PUBLISHED BY THE  
 HERALD PUBLISHING CO.  
 100 N. MAIN ST., MANCHESTER, CONN.  
 Telephone 2-1111  
 Second Class Post Office  
 Post Office at Manchester, Conn.  
 No. 100-1111  
 Second Class Permit No. 1111  
 Post Office at Manchester, Conn.  
 No. 100-1111

**Mancheater Evening Herald**  
 PUBLISHED BY THE  
 HERALD PUBLISHING CO.  
 100 N. MAIN ST., MANCHESTER, CONN.  
 Telephone 2-1111  
 Second Class Post Office  
 Post Office at Manchester, Conn.  
 No. 100-1111  
 Second Class Permit No. 1111  
 Post Office at Manchester, Conn.  
 No. 100-1111

**Connecticut Yankee**  
 By A. H. G.

It was quite a speech Norman Parrels, majority leader in the last House made before the Republican caucus in Hartford the other day. He was an individual who progressed in wisdom in proportion to his responsibilities. Parrels called for a brand of Republican thinking which represented the best of the party and not the worst. He said that the party was not as strong as it once was and that it was not as united as it once was. He said that the party was not as strong as it once was and that it was not as united as it once was.

**Machines And Men**  
 Tales of wonders of man's new mechanical age, some of them a little perverse in character, have been featuring the season of the American Science Fair in New York.

**The Man Of Stripes**  
 This seems to be open season for attack on Secretary of State Dulles. And across the country there seems to be a mounting idea that it would be a pretty good thing if he took his present illness as an excuse and stepped down.

**Mancheater Evening Herald**  
 PUBLISHED BY THE  
 HERALD PUBLISHING CO.  
 100 N. MAIN ST., MANCHESTER, CONN.  
 Telephone 2-1111  
 Second Class Post Office  
 Post Office at Manchester, Conn.  
 No. 100-1111  
 Second Class Permit No. 1111  
 Post Office at Manchester, Conn.  
 No. 100-1111

**Mancheater Evening Herald**  
 PUBLISHED BY THE  
 HERALD PUBLISHING CO.  
 100 N. MAIN ST., MANCHESTER, CONN.  
 Telephone 2-1111  
 Second Class Post Office  
 Post Office at Manchester, Conn.  
 No. 100-1111  
 Second Class Permit No. 1111  
 Post Office at Manchester, Conn.  
 No. 100-1111

**Mancheater Evening Herald**  
 PUBLISHED BY THE  
 HERALD PUBLISHING CO.  
 100 N. MAIN ST., MANCHESTER, CONN.  
 Telephone 2-1111  
 Second Class Post Office  
 Post Office at Manchester, Conn.  
 No. 100-1111  
 Second Class Permit No. 1111  
 Post Office at Manchester, Conn.  
 No. 100-1111

**Mancheater Evening Herald**  
 PUBLISHED BY THE  
 HERALD PUBLISHING CO.  
 100 N. MAIN ST., MANCHESTER, CONN.  
 Telephone 2-1111  
 Second Class Post Office  
 Post Office at Manchester, Conn.  
 No. 100-1111  
 Second Class Permit No. 1111  
 Post Office at Manchester, Conn.  
 No. 100-1111

**Mancheater Evening Herald**  
 PUBLISHED BY THE  
 HERALD PUBLISHING CO.  
 100 N. MAIN ST., MANCHESTER, CONN.  
 Telephone 2-1111  
 Second Class Post Office  
 Post Office at Manchester, Conn.  
 No. 100-1111  
 Second Class Permit No. 1111  
 Post Office at Manchester, Conn.  
 No. 100-1111

**Mancheater Evening Herald**  
 PUBLISHED BY THE  
 HERALD PUBLISHING CO.  
 100 N. MAIN ST., MANCHESTER, CONN.  
 Telephone 2-1111  
 Second Class Post Office  
 Post Office at Manchester, Conn.  
 No. 100-1111  
 Second Class Permit No. 1111  
 Post Office at Manchester, Conn.  
 No. 100-1111

**Mancheater Evening Herald**  
 PUBLISHED BY THE  
 HERALD PUBLISHING CO.  
 100 N. MAIN ST., MANCHESTER, CONN.  
 Telephone 2-1111  
 Second Class Post Office  
 Post Office at Manchester, Conn.  
 No. 100-1111  
 Second Class Permit No. 1111  
 Post Office at Manchester, Conn.  
 No. 100-1111

**Mancheater Evening Herald**  
 PUBLISHED BY THE  
 HERALD PUBLISHING CO.  
 100 N. MAIN ST., MANCHESTER, CONN.  
 Telephone 2-1111  
 Second Class Post Office  
 Post Office at Manchester, Conn.  
 No. 100-1111  
 Second Class Permit No. 1111  
 Post Office at Manchester, Conn.  
 No. 100-1111

**Mancheater Evening Herald**  
 PUBLISHED BY THE  
 HERALD PUBLISHING CO.  
 100 N. MAIN ST., MANCHESTER, CONN.  
 Telephone 2-1111  
 Second Class Post Office  
 Post Office at Manchester, Conn.  
 No. 100-1111  
 Second Class Permit No. 1111  
 Post Office at Manchester, Conn.  
 No. 100-1111

**Mancheater Evening Herald**  
 PUBLISHED BY THE  
 HERALD PUBLISHING CO.  
 100 N. MAIN ST., MANCHESTER, CONN.  
 Telephone 2-1111  
 Second Class Post Office  
 Post Office at Manchester, Conn.  
 No. 100-1111  
 Second Class Permit No. 1111  
 Post Office at Manchester, Conn.  
 No. 100-1111

**Mancheater Evening Herald**  
 PUBLISHED BY THE  
 HERALD PUBLISHING CO.  
 100 N. MAIN ST., MANCHESTER, CONN.  
 Telephone 2-1111  
 Second Class Post Office  
 Post Office at Manchester, Conn.  
 No. 100-1111  
 Second Class Permit No. 1111  
 Post Office at Manchester, Conn.  
 No. 100-1111

**Mancheater Evening Herald**  
 PUBLISHED BY THE  
 HERALD PUBLISHING CO.  
 100 N. MAIN ST., MANCHESTER, CONN.  
 Telephone 2-1111  
 Second Class Post Office  
 Post Office at Manchester, Conn.  
 No. 100-1111  
 Second Class Permit No. 1111  
 Post Office at Manchester, Conn.  
 No. 100-1111

**Mancheater Evening Herald**  
 PUBLISHED BY THE  
 HERALD PUBLISHING CO.  
 100 N. MAIN ST., MANCHESTER, CONN.  
 Telephone 2-1111  
 Second Class Post Office  
 Post Office at Manchester, Conn.  
 No. 100-1111  
 Second Class Permit No. 1111  
 Post Office at Manchester, Conn.  
 No. 100-1111

**Mancheater Evening Herald**  
 PUBLISHED BY THE  
 HERALD PUBLISHING CO.  
 100 N. MAIN ST., MANCHESTER, CONN.  
 Telephone 2-1111  
 Second Class Post Office  
 Post Office at Manchester, Conn.  
 No. 100-1111  
 Second Class Permit No. 1111  
 Post Office at Manchester, Conn.  
 No. 100-1111

**Churches**

**Church of the Nazarenes**  
 448 Main St.  
 C. C. C. Minister  
 Gertrude Wilson and  
 Florence Wood, Organists

**St. James R. C. Church**  
 St. John F. Hanson, Pastor  
 C. C. C. Minister  
 Rev. Edna J. Farrell

**St. John's R. C. Church**  
 St. John F. Hanson, Pastor  
 C. C. C. Minister  
 Rev. Edna J. Farrell

**St. Francis Assisi Church**  
 St. John F. Hanson, Pastor  
 C. C. C. Minister  
 Rev. Edna J. Farrell

**St. Maurice's R. C. Church**  
 St. John F. Hanson, Pastor  
 C. C. C. Minister  
 Rev. Edna J. Farrell

**St. Mary's Episcopal Church**  
 St. John F. Hanson, Pastor  
 C. C. C. Minister  
 Rev. Edna J. Farrell

**St. Paul's Episcopal Church**  
 St. John F. Hanson, Pastor  
 C. C. C. Minister  
 Rev. Edna J. Farrell

**St. Peter's Episcopal Church**  
 St. John F. Hanson, Pastor  
 C. C. C. Minister  
 Rev. Edna J. Farrell

**St. George's Episcopal Church**  
 St. John F. Hanson, Pastor  
 C. C. C. Minister  
 Rev. Edna J. Farrell

**St. Andrew's Episcopal Church**  
 St. John F. Hanson, Pastor  
 C. C. C. Minister  
 Rev. Edna J. Farrell

**St. Nicholas Episcopal Church**  
 St. John F. Hanson, Pastor  
 C. C. C. Minister  
 Rev. Edna J. Farrell

**St. Basil's Episcopal Church**  
 St. John F. Hanson, Pastor  
 C. C. C. Minister  
 Rev. Edna J. Farrell

**St. Demetrius Episcopal Church**  
 St. John F. Hanson, Pastor  
 C. C. C. Minister  
 Rev. Edna J. Farrell

**St. Ignace Episcopal Church**  
 St. John F. Hanson, Pastor  
 C. C. C. Minister  
 Rev. Edna J. Farrell

**St. Raphael Episcopal Church**  
 St. John F. Hanson, Pastor  
 C. C. C. Minister  
 Rev. Edna J. Farrell

**St. Anne Episcopal Church**  
 St. John F. Hanson, Pastor  
 C. C. C. Minister  
 Rev. Edna J. Farrell

**St. Elizabeth Episcopal Church**  
 St. John F. Hanson, Pastor  
 C. C. C. Minister  
 Rev. Edna J. Farrell

**St. Agnes Episcopal Church**  
 St. John F. Hanson, Pastor  
 C. C. C. Minister  
 Rev. Edna J. Farrell

**St. Cecilia Episcopal Church**  
 St. John F. Hanson, Pastor  
 C. C. C. Minister  
 Rev. Edna J. Farrell

**Droodles**  
 By ROGER PRICE

South American Voting Machine—When my good friend, Humpton Clabbercut, the defeated 51st Party Presidential Candidate, saw this Droodle, suggested by Randall Burgess of Hawaii, he set me on a political secret. At one time Humpton was President of the United States. He was elected in 1912. He was re-elected in 1916. He was elected in 1920. He was elected in 1924. He was elected in 1928. He was elected in 1932. He was elected in 1936. He was elected in 1940. He was elected in 1944. He was elected in 1948. He was elected in 1952. He was elected in 1956.

**Second Congregational Church**  
 185 North Main St.  
 Arnold W. Towner, Minister  
 Mrs. Mildred Colburn, Organist

**St. Vincent's R. C. Church**  
 St. John F. Hanson, Pastor  
 C. C. C. Minister  
 Rev. Edna J. Farrell

**St. Joseph's R. C. Church**  
 St. John F. Hanson, Pastor  
 C. C. C. Minister  
 Rev. Edna J. Farrell

**St. Michael's R. C. Church**  
 St. John F. Hanson, Pastor  
 C. C. C. Minister  
 Rev. Edna J. Farrell

**St. Anthony's R. C. Church**  
 St. John F. Hanson, Pastor  
 C. C. C. Minister  
 Rev. Edna J. Farrell

**St. Patrick's R. C. Church**  
 St. John F. Hanson, Pastor  
 C. C. C. Minister  
 Rev. Edna J. Farrell

**St. Ignace R. C. Church**  
 St. John F. Hanson, Pastor  
 C. C. C. Minister  
 Rev. Edna J. Farrell

**St. Raphael R. C. Church**  
 St. John F. Hanson, Pastor  
 C. C. C. Minister  
 Rev. Edna J. Farrell

**St. Anne R. C. Church**  
 St. John F. Hanson, Pastor  
 C. C. C. Minister  
 Rev. Edna J. Farrell

**St. Elizabeth R. C. Church**  
 St. John F. Hanson, Pastor  
 C. C. C. Minister  
 Rev. Edna J. Farrell

**St. Agnes R. C. Church**  
 St. John F. Hanson, Pastor  
 C. C. C. Minister  
 Rev. Edna J. Farrell

**St. Cecilia R. C. Church**  
 St. John F. Hanson, Pastor  
 C. C. C. Minister  
 Rev. Edna J. Farrell

**St. Demetrius R. C. Church**  
 St. John F. Hanson, Pastor  
 C. C. C. Minister  
 Rev. Edna J. Farrell

**St. Ignace R. C. Church**  
 St. John F. Hanson, Pastor  
 C. C. C. Minister  
 Rev. Edna J. Farrell

**St. Raphael R. C. Church**  
 St. John F. Hanson, Pastor  
 C. C. C. Minister  
 Rev. Edna J. Farrell

**St. Anne R. C. Church**  
 St. John F. Hanson, Pastor  
 C. C. C. Minister  
 Rev. Edna J. Farrell

**St. Elizabeth R. C. Church**  
 St. John F. Hanson, Pastor  
 C. C. C. Minister  
 Rev. Edna J. Farrell

**St. Agnes R. C. Church**  
 St. John F. Hanson, Pastor  
 C. C. C. Minister  
 Rev. Edna J. Farrell

**Daily Radio**

The following program schedules are supplied by the radio management, and are subject to change without notice.

**WVBC-990**  
**WDRB-1360**  
**WVBC-1360**  
**WDRB-1360**

**WVBC-990**  
**WDRB-1360**  
**WVBC-1360**  
**WDRB-1360**

**WVBC-990**  
**WDRB-1360**  
**WVBC-1360**  
**WDRB-1360**

**WVBC-990**  
**WDRB-1360**  
**WVBC-1360**  
**WDRB-1360**

**WVBC-990**  
**WDRB-1360**  
**WVBC-1360**  
**WDRB-1360**

**WVBC-990**  
**WDRB-1360**  
**WVBC-1360**  
**WDRB-1360**

**WVBC-990**  
**WDRB-1360**  
**WVBC-1360**  
**WDRB-1360**

**WVBC-990**  
**WDRB-1360**  
**WVBC-1360**  
**WDRB-1360**

**WVBC-990**  
**WDRB-1360**  
**WVBC-1360**  
**WDRB-1360**

**WVBC-990**  
**WDRB-1360**  
**WVBC-1360**  
**WDRB-1360**

**WVBC-990**  
**WDRB-1360**  
**WVBC-1360**  
**WDRB-1360**

**WVBC-990**  
**WDRB-1360**  
**WVBC-1360**  
**WDRB-1360**

**WVBC-990**  
**WDRB-1360**  
**WVBC-1360**  
**WDRB-1360**

**WVBC-990**  
**WDRB-1360**  
**WVBC-1360**  
**WDRB-1360**

**WVBC-990**  
**WDRB-1360**  
**WVBC-1360**  
**WDRB-1360**

**WVBC-990**  
**WDRB-1360**  
**WVBC-1360**  
**WDRB-1360**

**WVBC-990**  
**WDRB-1360**  
**WVBC-1360**  
**WDRB-1360**

**WVBC-990**  
**WDRB-1360**  
**WVBC-1360**  
**WDRB-1360**

**Jobless Claims Soar as Firm Cuts Operation**

Claims for unemployment compensation benefits in the Manchester area shot up by 14 per cent last week as a local garment shop laid off 130 workers, according to the State Labor Department.

The department, in its weekly report today said that unemployment claims on file here now total 420, compared with 394 in the preceding week.

The big jump was in the number of initial claims, which indicated new spells of unemployment. There were 108 such claims last week, 34 more than in the preceding week.

The report also indicated that unemployment claims taking shut-downs and seasonal layoffs caused a 13 per cent rise in unemployment claims throughout the State, according to the report. The State figure now stands at 23,327.

In the preceding week, it was 20,711.

All but six of the department's 13 offices reported a rise in unemployment claims with the largest—44 per cent—reported by the Manchester office. The State figure was 3,800.

**UN Starts Clearing Suez Canal Debris**  
 (Continued from Page One)

The only previous work done to open the canal consisted of limited operations by three British and French vessels in the Red Sea, 8,416 miles from the canal. The principle work was done by the British and French vessels. The British vessel was the *Agincourt* and the French vessel was the *Arcturion*.

The *Agincourt* was the first of the vessels to enter the canal. It was followed by the *Arcturion*. The *Agincourt* was the first of the vessels to enter the canal. It was followed by the *Arcturion*.

The *Agincourt* was the first of the vessels to enter the canal. It was followed by the *Arcturion*. The *Agincourt* was the first of the vessels to enter the canal. It was followed by the *Arcturion*.

The *Agincourt* was the first of the vessels to enter the canal. It was followed by the *Arcturion*. The *Agincourt* was the first of the vessels to enter the canal. It was followed by the *Arcturion*.

The *Agincourt* was the first of the vessels to enter the canal. It was followed by the *Arcturion*. The *Agincourt* was the first of the vessels to enter the canal. It was followed by the *Arcturion*.

The *Agincourt* was the first of the vessels to enter the canal. It was followed by the *Arcturion*. The *Agincourt* was the first of the vessels to enter the canal. It was followed by the *Arcturion*.

The *Agincourt* was the first of the vessels to enter the canal. It was followed by the *Arcturion*. The *Agincourt* was the first of the vessels to enter the canal. It was followed by the *Arcturion*.

The *Agincourt* was the first of the vessels to enter the canal. It was followed by the *Arcturion*. The *Agincourt* was the first of the vessels to enter the canal. It was followed by the *Arcturion*.

The *Agincourt* was the first of the vessels to enter the canal. It was followed by the *Arcturion*. The *Agincourt* was the first of the vessels to enter the canal. It was followed by the *Arcturion*.

The *Agincourt* was the first of the vessels to enter the canal. It was followed by the *Arcturion*. The *Agincourt* was the first of the vessels to enter the canal. It was followed by the *Arcturion*.

The *Agincourt* was the first of the vessels to enter the canal. It was followed by the *Arcturion*. The *Agincourt* was the first of the vessels to enter the canal. It was followed by the *Arcturion*.

The *Agincourt* was the first of the vessels to enter the canal. It was followed by the *Arcturion*. The *Agincourt* was the first of the vessels to enter the canal. It was followed by the *Arcturion*.

**Young Fellowship Goes to New York**

Members of the Young Fellowship of St. Peter's Episcopal Church who went on a trip to New York City Thursday were: Sandra Phelps, Bart and David Taylor, Christine and Susan Shover, David Crittenden, Sue-Jillan Kirkham, Alice and Peggy Hammond, Motors of Milwaukee, Wis., "MAC," says the franchise assures local businessmen that the factory authorized service for their motors.

This year's line, according to McBride, incorporates a model for every type of power requirement. There are now nine Evinrude motors ranging from 3 to 35 horsepower, says the new brochure.

"We all had lots of fun," said one of the little girls.

Reverend Visits Friends  
 The Rev. and Mrs. Howard C. Chance of Shelton were visiting here on Christmas Day. With Mrs. Chance's mother, Mrs. E. G. Lord, they had dinner with former parishioners of Mr. Chance's in Lebanon.

An item on the Churchmen's Society of the Holy Sepulchre, Congregational Church in the city, was that the Rev. John C. Beck, of Rockville, Md., Edward Rogers, real estate manager of the Boy's School, and others were in the city on Thursday, which will be of interest to all members of public or church schools.

Anyone who wishes to attend the annual meeting of the Society of the Holy Sepulchre, Congregational Church, should contact the pastor, Rev. John C. Beck, of Rockville, Md., at 28 Warren Street, MI 5-2800.

Classes to Resume  
 The Hebron Elementary School and Windham High School will open again on Wednesday. Classes in the Windham High School will be held in the afternoon. Classes in the Hebron Elementary School will be held in the morning.

The Junior Congregational Church of the Holy Sepulchre, Congregational Church, will hold its annual meeting on Thursday, Dec. 28, at 8 p.m. in the church. The meeting will be held in the church. The meeting will be held in the church.

Also on Jan. 6, the sacrament of the Lord's Supper will be observed at 10 a.m. in the church. The sacrament will be observed at 10 a.m. in the church. The sacrament will be observed at 10 a.m. in the church.

Mancheater Evening Herald  
 PUBLISHED BY THE  
 HERALD PUBLISHING CO.  
 100 N. MAIN ST., MANCHESTER, CONN.  
 Telephone 2-1111  
 Second Class Post Office  
 Post Office at Manchester, Conn.  
 No. 100-1111  
 Second Class Permit No. 1111  
 Post Office at Manchester, Conn.  
 No. 100-1111

Mancheater Evening Herald  
 PUBLISHED BY THE  
 HERALD PUBLISHING CO.  
 100 N. MAIN ST., MANCHESTER, CONN.  
 Telephone 2-1111  
 Second Class Post Office  
 Post Office at Manchester, Conn.  
 No. 100-1111  
 Second Class Permit No. 1111  
 Post Office at Manchester, Conn.  
 No. 100-1111

Mancheater Evening Herald  
 PUBLISHED BY THE  
 HERALD PUBLISHING CO.  
 100 N. MAIN ST., MANCHESTER, CONN.  
 Telephone 2-1111  
 Second Class Post Office  
 Post Office at Manchester, Conn.  
 No. 100-1111  
 Second Class Permit No. 1111  
 Post Office at Manchester, Conn.  
 No. 100-1111

Mancheater Evening Herald  
 PUBLISHED BY THE  
 HERALD PUBLISHING CO.  
 100 N. MAIN ST., MANCHESTER, CONN.  
 Telephone 2-1111  
 Second Class Post Office  
 Post Office at Manchester, Conn.  
 No. 100-1111  
 Second Class Permit No. 1111  
 Post Office at Manchester, Conn.  
 No. 100-1111

Mancheater Evening Herald  
 PUBLISHED BY THE  
 HERALD PUBLISHING CO.  
 100 N. MAIN ST., MANCHESTER, CONN.  
 Telephone 2-1111  
 Second Class Post Office  
 Post Office at Manchester, Conn.  
 No. 100-1111  
 Second Class Permit No. 1111  
 Post Office at Manchester, Conn.  
 No. 100-1111

Mancheater Evening Herald  
 PUBLISHED BY THE  
 HERALD PUBLISHING CO.  
 100 N. MAIN ST., MANCHESTER, CONN.  
 Telephone 2-1111  
 Second Class Post Office  
 Post Office at Manchester, Conn.  
 No. 100-1111  
 Second Class Permit No. 1111  
 Post Office at Manchester, Conn.  
 No. 100-1111

Mancheater Evening Herald  
 PUBLISHED BY THE  
 HERALD PUBLISHING CO.  
 100 N

### Sense and Nonsense

The student game was in progress and the kids were going at it hot and heavy. The passing man required of one of the fielders as to the score.

Informant—Fifty-one to nuthin', favor of the other side.

Passing Man—They're giving you quite a kicking, aren't they?

Informant—Heck, no! Just you wait. We ain't been to bat yet.

Boy—You did. It was going to strike 'll, but I grabbed it and held the game so it wouldn't disturb the other side.

Passing Man—Dawg, you're a real pitcher. You're a real pitcher. You're a real pitcher.

Informant—Look here, girl, do you know who I am?

Operator—No, but I know where you are.

Informant—I haven't averaged more than one meal a day all this week, lady.

Woman—Oh, are you trying to reduce, too?

Informant—No, I'm just trying to get a good meal.

Woman—Lucky, you're the same as me.

### CARNIVAL

BY DICK TURNER



### Missouri Mention

- 1. View
- 2. Trawl
- 3. Legal
- 4. Line
- 5. This state
- 6. Curved
- 7. Jefferson
- 8. It is capital
- 9. Curved
- 10. Missouri
- 11. Jefferson
- 12. Curved
- 13. Jefferson
- 14. Curved
- 15. Jefferson
- 16. Curved
- 17. Jefferson
- 18. Curved
- 19. Jefferson
- 20. Curved

### Answer to Previous Puzzle

1	2	3	4	5	6	7	8	9	10
11	12	13	14	15	16	17	18	19	20
21	22	23	24	25	26	27	28	29	30
31	32	33	34	35	36	37	38	39	40
41	42	43	44	45	46	47	48	49	50
51	52	53	54	55	56	57	58	59	60
61	62	63	64	65	66	67	68	69	70
71	72	73	74	75	76	77	78	79	80
81	82	83	84	85	86	87	88	89	90
91	92	93	94	95	96	97	98	99	100

### Green Manor Continues Unbeaten, Blast Explorers, 87-58

#### Rockville Upsets Southington, 60-59

**Kupy, Grouse Pace Attack In Home Tilt**

By Don Berger

Captain Wayne Kuferscheid and Bob Grouse came through with tremendous clutch performances in the final quarter of last night's game, against Southington High to pace the Rockville Knights to a stunning 60-59 upset win over the second place Blue Raiders.

### UConns Meet Pitt For Tourney Honor

Miami Beach, Fla., Dec. 29 (AP)—Pittsburgh and Connecticut are a pair of underdogs at the start, will play for the championship of the Orange Bowl Basketball Tournament tonight.

### Indians in Road Test Against Hall in CCIL

New York, Dec. 29 (AP)—The Chicago Bears ruled three points in their victory over the Cleveland Indians in a road test against Hall in CCIL.

### Pitcher Bob Feller Quits on His Own

Cleveland, Dec. 29 (AP)—Bob Feller, a big name in baseball for as long as a lot of fans can remember, will appear on the Cleveland Indians roster anymore.

### Bears Ranked Slight Choice In Title Bout

New York, Dec. 29 (AP)—The Chicago Bears ruled three points in their victory over the Cleveland Indians in a road test against Hall in CCIL.

### BUGS BUNNY



### OUR BOARDING HOUSE



### THE NEW YEAR HOLDS NO DREAM



### PRISCILLA'S POP



### He'll Risk It



### Baby Vasquez Great, Stops Rosi in 7th

Miami, Fla., Dec. 29 (AP)—Baby Vasquez, the clever, hard-hitting pitcher, stopped Rosi in the seventh inning.

### Elbow May Sideline Hornung, East Rules a Slight Favorite

St. Louis, Dec. 29 (AP)—The St. Louis Cardinals' ace pitcher, Steve Carlton, may be sidelined by an elbow injury.

### Elbow May Sideline Hornung, East Rules a Slight Favorite

St. Louis, Dec. 29 (AP)—The St. Louis Cardinals' ace pitcher, Steve Carlton, may be sidelined by an elbow injury.

### College Basketball Roundup

New York, Dec. 29 (AP)—Followers of Kansas' top-ranked basketball team were a happy group today.

### South Favored Against North

Montgomery, Ala., Dec. 29 (AP)—The South is favored to win the championship of the Southern Conference.

### ALLEY OOP



### THE MERRY MALEY



### BUZ SAWYER



### WESLEY UNTO



### Pro Basketball

Atlantic Division	W. P. 1st
Boston	12-17
Philadelphia	12-17
Pittsburgh	12-17
Syracuse	12-17
Western Division	W. P. 1st
Chicago	12-17
Los Angeles	12-17
San Francisco	12-17
Seattle	12-17

### Elbow May Sideline Hornung, East Rules a Slight Favorite

St. Louis, Dec. 29 (AP)—The St. Louis Cardinals' ace pitcher, Steve Carlton, may be sidelined by an elbow injury.

### Elbow May Sideline Hornung, East Rules a Slight Favorite

St. Louis, Dec. 29 (AP)—The St. Louis Cardinals' ace pitcher, Steve Carlton, may be sidelined by an elbow injury.

### Elbow May Sideline Hornung, East Rules a Slight Favorite

St. Louis, Dec. 29 (AP)—The St. Louis Cardinals' ace pitcher, Steve Carlton, may be sidelined by an elbow injury.

### Elbow May Sideline Hornung, East Rules a Slight Favorite

St. Louis, Dec. 29 (AP)—The St. Louis Cardinals' ace pitcher, Steve Carlton, may be sidelined by an elbow injury.

### JEFF COBB



### THE MERRY MALEY



### BUZ SAWYER



### WESLEY UNTO



### Elbow May Sideline Hornung, East Rules a Slight Favorite

St. Louis, Dec. 29 (AP)—The St. Louis Cardinals' ace pitcher, Steve Carlton, may be sidelined by an elbow injury.

### Elbow May Sideline Hornung, East Rules a Slight Favorite

St. Louis, Dec. 29 (AP)—The St. Louis Cardinals' ace pitcher, Steve Carlton, may be sidelined by an elbow injury.

### Elbow May Sideline Hornung, East Rules a Slight Favorite

St. Louis, Dec. 29 (AP)—The St. Louis Cardinals' ace pitcher, Steve Carlton, may be sidelined by an elbow injury.

### Elbow May Sideline Hornung, East Rules a Slight Favorite

St. Louis, Dec. 29 (AP)—The St. Louis Cardinals' ace pitcher, Steve Carlton, may be sidelined by an elbow injury.

### Elbow May Sideline Hornung, East Rules a Slight Favorite

St. Louis, Dec. 29 (AP)—The St. Louis Cardinals' ace pitcher, Steve Carlton, may be sidelined by an elbow injury.

### JEFF COBB



### THE MERRY MALEY



### BUZ SAWYER



### WESLEY UNTO



### Elbow May Sideline Hornung, East Rules a Slight Favorite

St. Louis, Dec. 29 (AP)—The St. Louis Cardinals' ace pitcher, Steve Carlton, may be sidelined by an elbow injury.

### Elbow May Sideline Hornung, East Rules a Slight Favorite

St. Louis, Dec. 29 (AP)—The St. Louis Cardinals' ace pitcher, Steve Carlton, may be sidelined by an elbow injury.

### Elbow May Sideline Hornung, East Rules a Slight Favorite

St. Louis, Dec. 29 (AP)—The St. Louis Cardinals' ace pitcher, Steve Carlton, may be sidelined by an elbow injury.

### Elbow May Sideline Hornung, East Rules a Slight Favorite

St. Louis, Dec. 29 (AP)—The St. Louis Cardinals' ace pitcher, Steve Carlton, may be sidelined by an elbow injury.

### Elbow May Sideline Hornung, East Rules a Slight Favorite

St. Louis, Dec. 29 (AP)—The St. Louis Cardinals' ace pitcher, Steve Carlton, may be sidelined by an elbow injury.

### JEFF COBB



### THE MERRY MALEY



### BUZ SAWYER



### WESLEY UNTO



### Elbow May Sideline Hornung, East Rules a Slight Favorite

St. Louis, Dec. 29 (AP)—The St. Louis Cardinals' ace pitcher, Steve Carlton, may be sidelined by an elbow injury.

### Elbow May Sideline Hornung, East Rules a Slight Favorite

St. Louis, Dec. 29 (AP)—The St. Louis Cardinals' ace pitcher, Steve Carlton, may be sidelined by an elbow injury.

### Elbow May Sideline Hornung, East Rules a Slight Favorite

St. Louis, Dec. 29 (AP)—The St. Louis Cardinals' ace pitcher, Steve Carlton, may be sidelined by an elbow injury.

### Elbow May Sideline Hornung, East Rules a Slight Favorite

St. Louis, Dec. 29 (AP)—The St. Louis Cardinals' ace pitcher, Steve Carlton, may be sidelined by an elbow injury.

### Elbow May Sideline Hornung, East Rules a Slight Favorite

St. Louis, Dec. 29 (AP)—The St. Louis Cardinals' ace pitcher, Steve Carlton, may be sidelined by an elbow injury.

### JEFF COBB



### THE MERRY MALEY



### BUZ SAWYER



### WESLEY UNTO



### Elbow May Sideline Hornung, East Rules a Slight Favorite

St. Louis, Dec. 29 (AP)—The St. Louis Cardinals' ace pitcher, Steve Carlton, may be sidelined by an elbow injury.

### Elbow May Sideline Hornung, East Rules a Slight Favorite

St. Louis, Dec. 29 (AP)—The St. Louis Cardinals' ace pitcher, Steve Carlton, may be sidelined by an elbow injury.

### Elbow May Sideline Hornung, East Rules a Slight Favorite

St. Louis, Dec. 29 (AP)—The St. Louis Cardinals' ace pitcher, Steve Carlton, may be sidelined by an elbow injury.

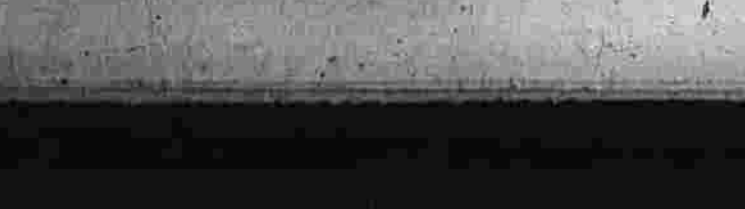
### Elbow May Sideline Hornung, East Rules a Slight Favorite

St. Louis, Dec. 29 (AP)—The St. Louis Cardinals' ace pitcher, Steve Carlton, may be sidelined by an elbow injury.

### Elbow May Sideline Hornung, East Rules a Slight Favorite

St. Louis, Dec. 29 (AP)—The St. Louis Cardinals' ace pitcher, Steve Carlton, may be sidelined by an elbow injury.

### JEFF COBB



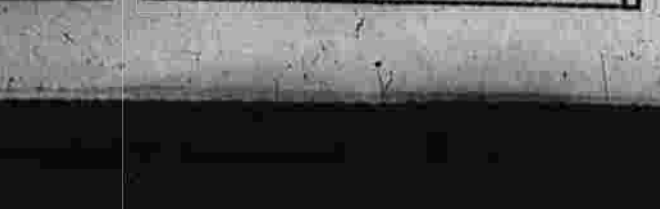
### THE MERRY MALEY



### BUZ SAWYER



### WESLEY UNTO



### Elbow May Sideline Hornung, East Rules a Slight Favorite

St. Louis, Dec. 29 (AP)—The St. Louis Cardinals' ace pitcher, Steve Carlton, may be sidelined by an elbow injury.

### Elbow May Sideline Hornung, East Rules a Slight Favorite

St. Louis, Dec. 29 (AP)—The St. Louis Cardinals' ace pitcher, Steve Carlton, may be sidelined by an elbow injury.

### Elbow May Sideline Hornung, East Rules a Slight Favorite

St. Louis, Dec. 29 (AP)—The St. Louis Cardinals' ace pitcher, Steve Carlton, may be sidelined by an elbow injury.

### Elbow May Sideline Hornung, East Rules a Slight Favorite

St. Louis, Dec. 29 (AP)—The St. Louis Cardinals' ace pitcher, Steve Carlton, may be sidelined by an elbow injury.

### Elbow May Sideline Hornung, East Rules a Slight Favorite

St. Louis, Dec. 29 (AP)—The St. Louis Cardinals' ace pitcher, Steve Carlton, may be sidelined by an elbow injury.



About Town

The Manchester Public Health Nursing Assn. office will close at noon Monday. Emergency calls will be handled at Manchester Memorial Hospital.

The Connecticut State Employment Service and the Unemployment Division, 504 Main St., will be closed Monday and Tuesday for the New Year's holiday. The office will reopen Wednesday at 8:30 a.m.

A group of college students representing 20 Methodist Churches in the Norwich District gathered at South Methodist Church Thursday for the annual college students' program. A 3 p.m. panel discussion on the subject "The Student's World" was followed by square dancing, a dinner, variety program and candlelight service in the church.

Children of Emanuel Lutheran Church School will present their Christmas program tomorrow at 4:30 in the church sanctuary. Parents and friends are invited. There will be songs, readings, a pageant by the smaller children, a dinner, a play by the Junior Chorus. Children are reminded to bring their Christmas offerings to the church to be distributed in the classrooms following the program.

A rehearsal for all children taking part in the Christmas play to be presented Jan. 6 in St. John's Church, will be held tomorrow at 1 p.m. in the parish hall.

GENERAL TV SERVICE Days \$2.95 A Cash Night \$3.95 Plus Parts TEL. MI 3-5481

MARLOW'S And Other Fine Stores OPEN WED. THRU SAT. Closed Monday and Tuesday (Next Week Only)

Wrought Iron Railings Parch Column VALLEY WELDING CO. 122 N. BALDWIN AVE. P.O. Box 10111, Manchester, N.H. Glastonbury ME 5-0111

FREE DELIVERY Arthur Drug Stores

NOW... Right in your own backyard... Custom Air Conditioning!

So many local merchants want air conditioning, we set out to bring them the finest that money can buy. We are honored to announce our appointment as franchised dealers for Carrier Air Conditioning—the product of the firm that founded the air conditioning industry. We offer a complete line of Carrier Series Weathermakers—the most compact and efficient self-contained air conditioning unit ever built. We also offer expert advice on installed air conditioning for larger spaces, or if you plan to air condition your business, why not talk it over?

A&W REFRIGERATION 143 WEST MIDDLE TURNPIKE PHONE MI 9-1237 "Authorized Carrier Sales and Service"

TWO or THREE TRACK COMBINATION Aluminum Windows FOR FREE ESTIMATES PHONE MI 9-7095 ALUMINUM DOORS, AWNINGS, CANOPIES and JALOUSIES

BILL TUNSKY MI 9-9095 "Service and Satisfaction Guaranteed"

BEFORE YOU CONVERT INVESTIGATE— FLUID HEAT

FOGARTY BROTHERS FUEL OIL JEDDO HIGHLAND COAL—CONNECTICUT COKE 319 BROAD ST. MI 9-4539

Heard Along Main Street And on Some of Manchester's Side Streets, Too

EXIT TO BIRCH ST. EXIT TO BIRCH ST.

EXIT TO BIRCH ST. EXIT TO BIRCH ST.

EXIT TO BIRCH ST. EXIT TO BIRCH ST.

EXIT TO BIRCH ST. EXIT TO BIRCH ST.

EXIT TO BIRCH ST. EXIT TO BIRCH ST.

EXIT TO BIRCH ST. EXIT TO BIRCH ST.

EXIT TO BIRCH ST. EXIT TO BIRCH ST.

EXIT TO BIRCH ST. EXIT TO BIRCH ST.

EXIT TO BIRCH ST. EXIT TO BIRCH ST.

EXIT TO BIRCH ST. EXIT TO BIRCH ST.

EXIT TO BIRCH ST. EXIT TO BIRCH ST.

EXIT TO BIRCH ST. EXIT TO BIRCH ST.

EXIT TO BIRCH ST. EXIT TO BIRCH ST.

EXIT TO BIRCH ST. EXIT TO BIRCH ST.

EXIT TO BIRCH ST. EXIT TO BIRCH ST.

EXIT TO BIRCH ST. EXIT TO BIRCH ST.

EXIT TO BIRCH ST. EXIT TO BIRCH ST.

EXIT TO BIRCH ST. EXIT TO BIRCH ST.

EXIT TO BIRCH ST. EXIT TO BIRCH ST.

EXIT TO BIRCH ST. EXIT TO BIRCH ST.

EXIT TO BIRCH ST. EXIT TO BIRCH ST.

EXIT TO BIRCH ST. EXIT TO BIRCH ST.

EXIT TO BIRCH ST. EXIT TO BIRCH ST.

EXIT TO BIRCH ST. EXIT TO BIRCH ST.

EXIT TO BIRCH ST. EXIT TO BIRCH ST.

EXIT TO BIRCH ST. EXIT TO BIRCH ST.

EXIT TO BIRCH ST. EXIT TO BIRCH ST.

EXIT TO BIRCH ST. EXIT TO BIRCH ST.

Thomas-Cooper Wedding

The mother of the bride chose a Dior, blue taffeta, street-length dress with white accessories, and the mother of the groom, a street-length dress of milk brown crepe. Both had matching veils and carried the same bouquet of white flowers.

The bride's traveling costume, when leaving on a wedding trip to the honeymoon, was a white and brown wool suit with beige and brown accessories and an orchid corsage.

A graduate of Manchester High School in the Class of 1954, the bride attended the University of Connecticut. The bridegroom graduated from Yale University in 1955 and is now a student at New York University-Bellevue Medical School.

The bride's traveling costume, when leaving on a wedding trip to the honeymoon, was a white and brown wool suit with beige and brown accessories and an orchid corsage.

A graduate of Manchester High School in the Class of 1954, the bride attended the University of Connecticut. The bridegroom graduated from Yale University in 1955 and is now a student at New York University-Bellevue Medical School.

The bride's traveling costume, when leaving on a wedding trip to the honeymoon, was a white and brown wool suit with beige and brown accessories and an orchid corsage.

A graduate of Manchester High School in the Class of 1954, the bride attended the University of Connecticut. The bridegroom graduated from Yale University in 1955 and is now a student at New York University-Bellevue Medical School.

The bride's traveling costume, when leaving on a wedding trip to the honeymoon, was a white and brown wool suit with beige and brown accessories and an orchid corsage.

A graduate of Manchester High School in the Class of 1954, the bride attended the University of Connecticut. The bridegroom graduated from Yale University in 1955 and is now a student at New York University-Bellevue Medical School.

The bride's traveling costume, when leaving on a wedding trip to the honeymoon, was a white and brown wool suit with beige and brown accessories and an orchid corsage.

A graduate of Manchester High School in the Class of 1954, the bride attended the University of Connecticut. The bridegroom graduated from Yale University in 1955 and is now a student at New York University-Bellevue Medical School.

The bride's traveling costume, when leaving on a wedding trip to the honeymoon, was a white and brown wool suit with beige and brown accessories and an orchid corsage.

A graduate of Manchester High School in the Class of 1954, the bride attended the University of Connecticut. The bridegroom graduated from Yale University in 1955 and is now a student at New York University-Bellevue Medical School.

The bride's traveling costume, when leaving on a wedding trip to the honeymoon, was a white and brown wool suit with beige and brown accessories and an orchid corsage.

A graduate of Manchester High School in the Class of 1954, the bride attended the University of Connecticut. The bridegroom graduated from Yale University in 1955 and is now a student at New York University-Bellevue Medical School.

The bride's traveling costume, when leaving on a wedding trip to the honeymoon, was a white and brown wool suit with beige and brown accessories and an orchid corsage.

A graduate of Manchester High School in the Class of 1954, the bride attended the University of Connecticut. The bridegroom graduated from Yale University in 1955 and is now a student at New York University-Bellevue Medical School.

The bride's traveling costume, when leaving on a wedding trip to the honeymoon, was a white and brown wool suit with beige and brown accessories and an orchid corsage.

A graduate of Manchester High School in the Class of 1954, the bride attended the University of Connecticut. The bridegroom graduated from Yale University in 1955 and is now a student at New York University-Bellevue Medical School.

The bride's traveling costume, when leaving on a wedding trip to the honeymoon, was a white and brown wool suit with beige and brown accessories and an orchid corsage.

A graduate of Manchester High School in the Class of 1954, the bride attended the University of Connecticut. The bridegroom graduated from Yale University in 1955 and is now a student at New York University-Bellevue Medical School.

The bride's traveling costume, when leaving on a wedding trip to the honeymoon, was a white and brown wool suit with beige and brown accessories and an orchid corsage.

A graduate of Manchester High School in the Class of 1954, the bride attended the University of Connecticut. The bridegroom graduated from Yale University in 1955 and is now a student at New York University-Bellevue Medical School.

The bride's traveling costume, when leaving on a wedding trip to the honeymoon, was a white and brown wool suit with beige and brown accessories and an orchid corsage.

A graduate of Manchester High School in the Class of 1954, the bride attended the University of Connecticut. The bridegroom graduated from Yale University in 1955 and is now a student at New York University-Bellevue Medical School.

The bride's traveling costume, when leaving on a wedding trip to the honeymoon, was a white and brown wool suit with beige and brown accessories and an orchid corsage.

A graduate of Manchester High School in the Class of 1954, the bride attended the University of Connecticut. The bridegroom graduated from Yale University in 1955 and is now a student at New York University-Bellevue Medical School.

The bride's traveling costume, when leaving on a wedding trip to the honeymoon, was a white and brown wool suit with beige and brown accessories and an orchid corsage.

Firms Pledge \$12,000 to MMH Drive

A \$12,000 contribution has been subscribed to the Manchester Memorial Hospital expansion fund drive by four concerns, headed by William Poindexter.

The gift will be used to build and equip the nurses' station on the first floor of the projected building.

The gift will be used to build and equip the nurses' station on the first floor of the projected building.

The gift will be used to build and equip the nurses' station on the first floor of the projected building.

The gift will be used to build and equip the nurses' station on the first floor of the projected building.

The gift will be used to build and equip the nurses' station on the first floor of the projected building.

The gift will be used to build and equip the nurses' station on the first floor of the projected building.

The gift will be used to build and equip the nurses' station on the first floor of the projected building.

The gift will be used to build and equip the nurses' station on the first floor of the projected building.

The gift will be used to build and equip the nurses' station on the first floor of the projected building.

The gift will be used to build and equip the nurses' station on the first floor of the projected building.

The gift will be used to build and equip the nurses' station on the first floor of the projected building.

The gift will be used to build and equip the nurses' station on the first floor of the projected building.

The gift will be used to build and equip the nurses' station on the first floor of the projected building.

The gift will be used to build and equip the nurses' station on the first floor of the projected building.

The gift will be used to build and equip the nurses' station on the first floor of the projected building.

The gift will be used to build and equip the nurses' station on the first floor of the projected building.

The gift will be used to build and equip the nurses' station on the first floor of the projected building.

The gift will be used to build and equip the nurses' station on the first floor of the projected building.

The gift will be used to build and equip the nurses' station on the first floor of the projected building.

The gift will be used to build and equip the nurses' station on the first floor of the projected building.

The gift will be used to build and equip the nurses' station on the first floor of the projected building.

The gift will be used to build and equip the nurses' station on the first floor of the projected building.

The gift will be used to build and equip the nurses' station on the first floor of the projected building.

The gift will be used to build and equip the nurses' station on the first floor of the projected building.

The gift will be used to build and equip the nurses' station on the first floor of the projected building.

The gift will be used to build and equip the nurses' station on the first floor of the projected building.

The gift will be used to build and equip the nurses' station on the first floor of the projected building.

May I Prove DYNAMIC INSURANCE Means Better Protection

LEE M. SILVERSTEIN

EXPECTING his home to be heated with GULF SOLAR HEAT

cause it has to be hospital care and... WILLIAMS OIL SERVICE 341 BROAD ST. TEL. MI 9-0448

WILLIAMS OIL SERVICE 341 BROAD ST. TEL. MI 9-0448

WILLIAMS OIL SERVICE 341 BROAD ST. TEL. MI 9-0448

WILLIAMS OIL SERVICE 341 BROAD ST. TEL. MI 9-0448

WILLIAMS OIL SERVICE 341 BROAD ST. TEL. MI 9-0448

WILLIAMS OIL SERVICE 341 BROAD ST. TEL. MI 9-0448

WILLIAMS OIL SERVICE 341 BROAD ST. TEL. MI 9-0448

WILLIAMS OIL SERVICE 341 BROAD ST. TEL. MI 9-0448

WILLIAMS OIL SERVICE 341 BROAD ST. TEL. MI 9-0448

WILLIAMS OIL SERVICE 341 BROAD ST. TEL. MI 9-0448

WILLIAMS OIL SERVICE 341 BROAD ST. TEL. MI 9-0448

WILLIAMS OIL SERVICE 341 BROAD ST. TEL. MI 9-0448

WILLIAMS OIL SERVICE 341 BROAD ST. TEL. MI 9-0448

WILLIAMS OIL SERVICE 341 BROAD ST. TEL. MI 9-0448

WILLIAMS OIL SERVICE 341 BROAD ST. TEL. MI 9-0448

WILLIAMS OIL SERVICE 341 BROAD ST. TEL. MI 9-0448

WILLIAMS OIL SERVICE 341 BROAD ST. TEL. MI 9-0448

WILLIAMS OIL SERVICE 341 BROAD ST. TEL. MI 9-0448

WILLIAMS OIL SERVICE 341 BROAD ST. TEL. MI 9-0448

WILLIAMS OIL SERVICE 341 BROAD ST. TEL. MI 9-0448

WILLIAMS OIL SERVICE 341 BROAD ST. TEL. MI 9-0448

WILLIAMS OIL SERVICE 341 BROAD ST. TEL. MI 9-0448

WILLIAMS OIL SERVICE 341 BROAD ST. TEL. MI 9-0448

WILLIAMS OIL SERVICE 341 BROAD ST. TEL. MI 9-0448

WILLIAMS OIL SERVICE 341 BROAD ST. TEL. MI 9-0448

WILLIAMS OIL SERVICE 341 BROAD ST. TEL. MI 9-0448

Manchester Evening Herald

Manchester—A City of Village Charm

MANCHESTER, CONN., MONDAY, DECEMBER 31, 1956

Fire Cuts Hartford Cathedral Second Catholic Church Severely Damaged in 32 Hours

\$5 Million Loss At St. Joseph's

Hartford, Dec. 31 (AP)—Hartford Fire Chief Henry G. Thomas said shortly after noon today that the 4 1/2 hour fire that virtually destroyed St. Joseph's Cathedral was under control.

The effort to save the historical, huge cathedral failed; said the chief, when the blaze spread up into a crawlway between the ceiling and the roof. This section of the building had no fire stops, he stated.

Hartford, Dec. 31 (AP)—St. Joseph's Cathedral, center of worship for Catholics of the Archdiocese of Hartford, was destroyed by fire today.

For an hour, the great structure was like a giant furnace raving full blast. The heat drove firemen back and could be felt a block away.

City Manager Carleton F. Sharpe estimated that the monetary damage would range upwards of \$5 million.

It appeared that the only salvageable part of the massive structure was its foundation.

Fire was discovered in the church after the 7:30 mass this morning. By 11 a.m. the entire Cathedral was a raging inferno. Flames covered the roof of the massive structure. Smoke billowed a thousand feet in the air.

Firemen had fought the fire for about an hour and a half in the cathedral's four towers, always watching the spire high point at the rear of the building. It was not until 11:15 a.m. that the fire was brought under control.

Shortly before 11, the flames broke through the roof of the cathedral, and signaling the destruction of the massive structure.

The fire was the second to strike a Catholic church in the city within 32 hours. St. Patrick's Church and Church of Ann Streets was ravaged by fire early Sunday morning.

Causes of that fire is still unknown and even while the fire was being fought, the cause of the fire was being investigated by fire officials as to the cause.

When it was evident the interior of the Cathedral would be destroyed, the fire department concentrated on the roof, making the search for the elusive "Red Bomb."

The city's 20,000-member police department is now concentrating on the search for the elusive "Red Bomb."

The volume of search was quadrupled in the last few hours. The search for the elusive "Red Bomb" is now being conducted by the city's 20,000-member police department.

The search for the elusive "Red Bomb" is now being conducted by the city's 20,000-member police department.

The search for the elusive "Red Bomb" is now being conducted by the city's 20,000-member police department.

The search for the elusive "Red Bomb" is now being conducted by the city's 20,000-member police department.

The search for the elusive "Red Bomb" is now being conducted by the city's 20,000-member police department.

The search for the elusive "Red Bomb" is now being conducted by the city's 20,000-member police department.

The search for the elusive "Red Bomb" is now being conducted by the city's 20,000-member police department.

The search for the elusive "Red Bomb" is now being conducted by the city's 20,000-member police department.

The search for the elusive "Red Bomb" is now being conducted by the city's 20,000-member police department.

The search for the elusive "Red Bomb" is now being conducted by the city's 20,000-member police department.

EXIT TO BIRCH ST. EXIT TO BIRCH ST.

EXIT TO BIRCH ST. EXIT TO BIRCH ST.

EXIT TO BIRCH ST. EXIT TO BIRCH ST.

EXIT TO BIRCH ST. EXIT TO BIRCH ST.

EXIT TO BIRCH ST. EXIT TO BIRCH ST.

EXIT TO BIRCH ST. EXIT TO BIRCH ST.

EXIT TO BIRCH ST. EXIT TO BIRCH ST.

EXIT TO BIRCH ST. EXIT TO BIRCH ST.

EXIT TO BIRCH ST. EXIT TO BIRCH ST.

EXIT TO BIRCH ST. EXIT TO BIRCH ST.

EXIT TO BIRCH ST. EXIT TO BIRCH ST.

EXIT TO BIRCH ST. EXIT TO BIRCH ST.

EXIT TO BIRCH ST. EXIT TO BIRCH ST.

EXIT TO BIRCH ST. EXIT TO BIRCH ST.

EXIT TO BIRCH ST. EXIT TO BIRCH ST.

EXIT TO BIRCH ST. EXIT TO BIRCH ST.

EXIT TO BIRCH ST. EXIT TO BIRCH ST.

EXIT TO BIRCH ST. EXIT TO BIRCH ST.

EXIT TO BIRCH ST. EXIT TO BIRCH ST.

EXIT TO BIRCH ST. EXIT TO BIRCH ST.

EXIT TO BIRCH ST. EXIT TO BIRCH ST.

EXIT TO BIRCH ST. EXIT TO BIRCH ST.

EXIT TO BIRCH ST. EXIT TO BIRCH ST.

EXIT TO BIRCH ST. EXIT TO BIRCH ST.

EXIT TO BIRCH ST. EXIT TO BIRCH ST.

EXIT TO BIRCH ST. EXIT TO BIRCH ST.

EXIT TO BIRCH ST. EXIT TO BIRCH ST.

EXIT TO BIRCH ST. EXIT TO BIRCH ST.

EXIT TO BIRCH ST. EXIT TO BIRCH ST.

EXIT TO BIRCH ST. EXIT TO BIRCH ST.

EXIT TO BIRCH ST. EXIT TO BIRCH ST.

EXIT TO BIRCH ST. EXIT TO BIRCH ST.

EXIT TO BIRCH ST. EXIT TO BIRCH ST.

EXIT TO BIRCH ST. EXIT TO BIRCH ST.

EXIT TO BIRCH ST. EXIT TO BIRCH ST.

EXIT TO BIRCH ST. EXIT TO BIRCH ST.

EXIT TO BIRCH ST. EXIT TO BIRCH ST.

EXIT TO BIRCH ST. EXIT TO BIRCH ST.

EXIT TO BIRCH ST. EXIT TO BIRCH ST.

EXIT TO BIRCH ST. EXIT TO BIRCH ST.

EXIT TO BIRCH ST. EXIT TO BIRCH ST.

EXIT TO BIRCH ST. EXIT TO BIRCH ST.

EXIT TO BIRCH ST. EXIT TO BIRCH ST.

EXIT TO BIRCH ST. EXIT TO BIRCH ST.

EXIT TO BIRCH ST. EXIT TO BIRCH ST.

EXIT TO BIRCH ST. EXIT TO BIRCH ST.

EXIT TO BIRCH ST. EXIT TO BIRCH ST.

EXIT TO BIRCH ST. EXIT TO BIRCH ST.

EXIT TO BIRCH ST. EXIT TO BIRCH ST.

EXIT TO BIRCH ST. EXIT TO BIRCH ST.

EXIT TO BIRCH ST. EXIT TO BIRCH ST.

EXIT TO BIRCH ST. EXIT TO BIRCH ST.

EXIT TO BIRCH ST. EXIT TO BIRCH ST.

EXIT TO BIRCH ST. EXIT TO BIRCH ST.

EXIT